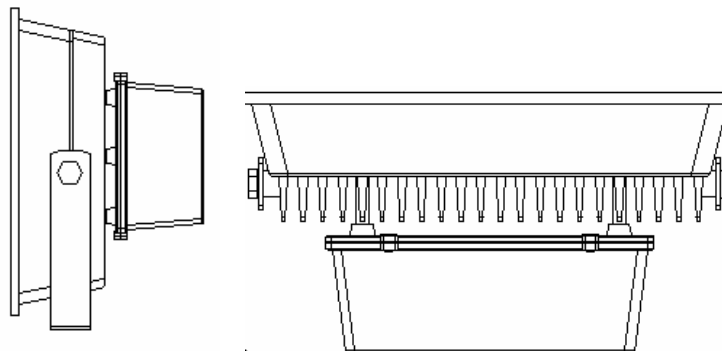


FLC/Y50BF 50W 投射燈



Specifications :

Model	FLC50BF	FLY50BF
Input	AC 110V~240V	
Power Consumption	59W	
Power Factor	0.98	
LED Quantity	COB 50W×1pcs	
Beam Angle	120°	
CCT	5700K	3000K
CRI	>70	
Luminous Flux	2900 Lm	2300 Lm
Illuminance@2M	348 Lux	270 Lux
Illuminance@3M	194 Lux	150 Lux
Ingress Protection	IP65	
Operating Temperature	-20~40°C	
Material	Aluminum, Tempered Glass	
Dimensions(not including IR sensor)	L×W×D=224×185×130mm	
Weight	3.3kg	

Note : Electric wire contents 3 cores without socket