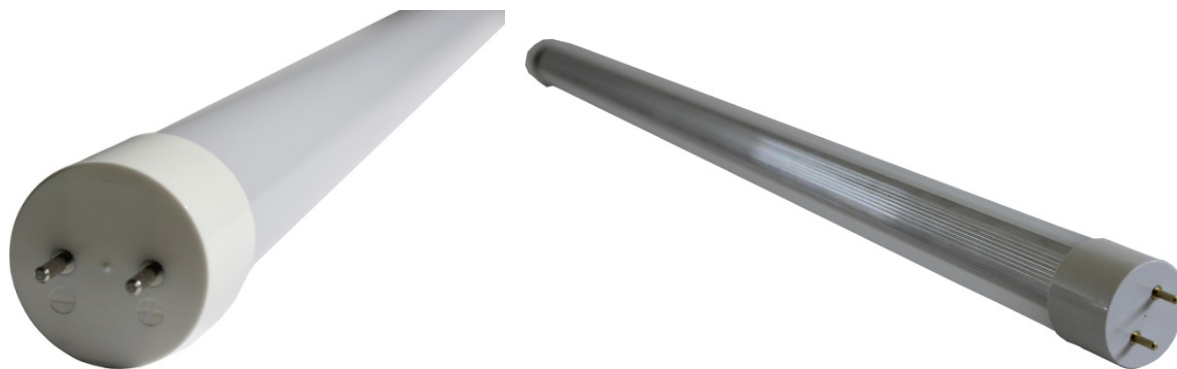


T1060/40/3020/10BM270 4/2 尺燈管系列



Specifications :

Model	T106020BM270	T106010BM270
Input	AC 100V~240V	
Power Consumption	20W±10%	10W±10%
Power Factor	>0.9	
LED Source	from Taiwan	
LED Quantity	80pcs	40pcs
Base	G13	
CCT	6000K/4000K/3000K	
CRI	>70	
Luminous Flux	2000Lm	1000Lm
Illuminance@1M	496 Lux	250 Lux
Illuminance@2M	194 Lux	105 Lux
Illuminance@3M	109 Lux	56 Lux
Beam Angle	270°	
Operating Temperature	0~40°C	
Storage Temperature	-20~60°C	
Dimensions	D=30mm; L=2ft:580mm; L=4ft:1198mm	
Materials	Aluminum, PC	
Weight	270g	150g
Made in	Taiwan	

注意事項：

◎安裝前請先移除起動器；本產品不可使用在電子安定器燈具上

◎若AC電源線路跳過燈具內的大電容、安定器，直接修改通過燈管單側，可達最佳省電狀態